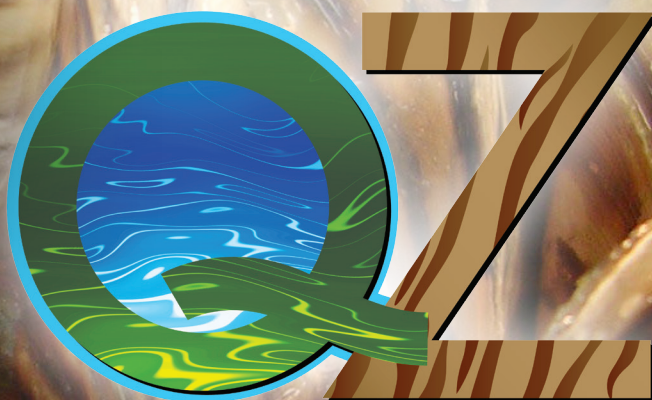




# POWERFUL INVASIVE SPECIES TREATMENT

NSF

Certified to  
NSF/ANSI 60



## ZEBRA MUSSEL EMERGENCY RESPONSE

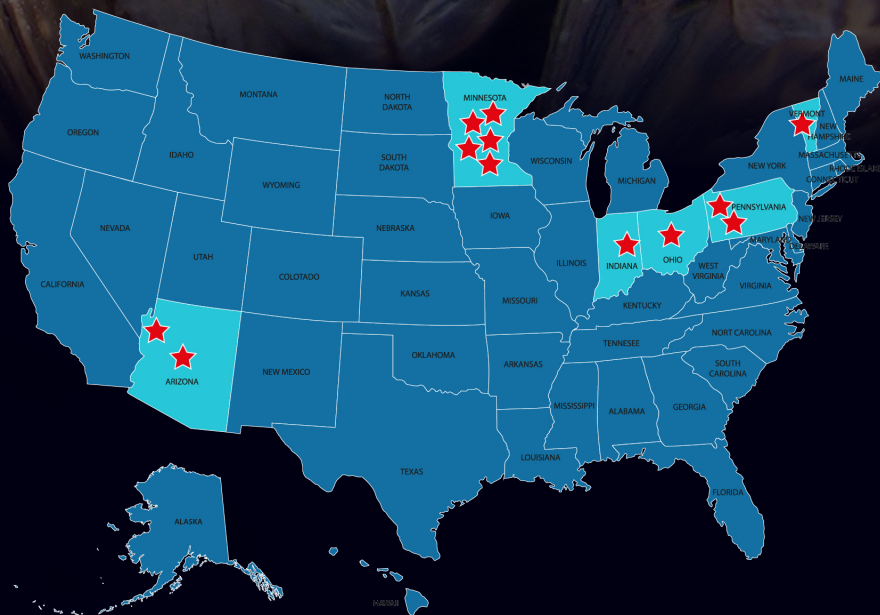
Most states are worried about boats transferring zebra mussels from an infested lake to a clean lake. The problem is there is no plan in place when it actually does happen.

- The time to act is immediately.
- At the first citing of zebra mussels there is no time to waste.
- This is also not the time to give up.

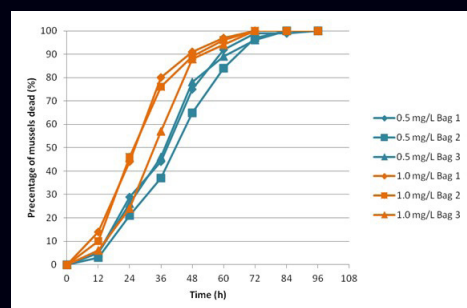
**EarthTec QZ** can eradicate zebra mussels in just a few weeks before they spread to a complete infestation. We have proven results and offer a **100% Satisfaction Guarantee**.

We have an Emergency Response Team that is able to quickly take action in order to avoid an infestation and potential lake closures.

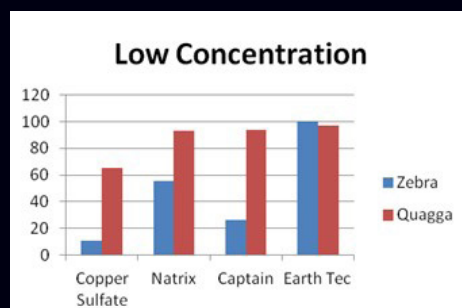
**Contact us immediately:** David Hammond, 510-289-3310



## MORTALITY RATES



**Figure 22**  
Zebra mussel mortality when exposed to EarthTec for 96 hours.



**Figure 43**  
Low concentration. Average percent mortality after 96 hours of exposure to low concentration of algaecides.

From: "Efficacy of Copper Based Algaecides for Control of Quagga and Zebra Mussels", 2013, a report for the California Dept. of Water Resources by Renata Claudi <. Sc., T.H. Prescott O. Eng., Sergey Masticky Ph.D. & Heather Coffey M. Sc.

**earthtecQZ.com**